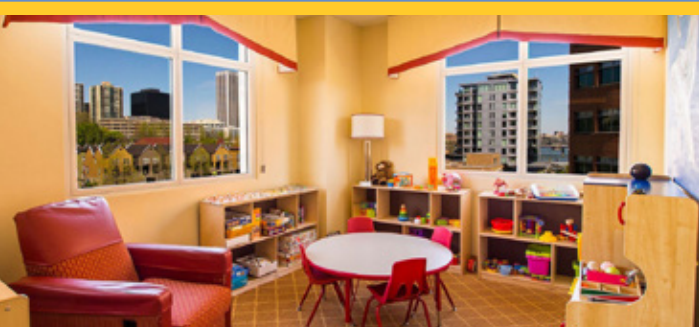


## WEST HOUSE WATERFRONT:

Located on the fifth floor of the Marriott Residence Inn, the West House Waterfront serves patients of Doernbecher Children's Hospital. It is about a 10 minute drive to the hospital from the House. Transportation options are available. The House is able to accommodate **25 families** each night.



## EAST HOUSE:

Ronald McDonald East House serves patients of Randall Children's Hospital, The Kartini Clinic, Shriners Hospital, and other Portland area hospitals and clinics. The House is within walking distance of Randall and Kartini, and about a 15 minute drive to Shriners. The House is able to accommodate **25 families** each night.



## EAST RONALD McDONALD HOUSE

2620 N Commercial Avenue  
Portland, OR 97227  
(971) 230-6700

## WEST RONALD McDONALD HOUSE

2115 SW River Parkway  
Portland, OR 97201  
(971) 230-0808

Ronald McDonald House Charities of Oregon and Southwest Washington provides a "home away from home" for families with seriously ill children, and supports initiatives to improve pediatric health.

Contact our Family Placement Coordinator with questions or for more information!  
**(971) 230-6702**



Ronald McDonald  
House Charities®  
Oregon & Southwest Washington

# RONALD McDONALD HOUSE Stay with Us

[rmhcoregon.org](http://rmhcoregon.org)



Ronald McDonald  
House Charities®  
Oregon & Southwest Washington



## WHAT IS OFFERED AT THE HOUSE?

Each location offers the following, and more:

- Private bedroom and bathroom
- Community spaces including kitchen, craft room, playroom, game room, living room and laundry facilities
- Several meals and activities throughout the week
- Wifi access as well as community computers
- Items to borrow including movies, video games, entertainment passes and baby items

There is no cost or fee to stay here, although donations are greatly appreciated. We can offer one room per family. Due to high demand, **we do ask that the patient's parent or legal guardian occupy the room every night of their stay.**



## HOW CAN I RESERVE A ROOM?

To qualify to stay at a Portland Ronald McDonald House, families must:

1. Have a patient 21 years or younger being treated at a Portland hospital.
  - a. Parents under the age of 18 must be accompanied by their parent or legal guardian.
  - b. Patients age 18–21 must be accompanied by a support person who is age 18 or older.
  - c. Families with an unborn baby can request to stay two weeks prior to delivery, with a doctor's recommendation.
2. Live more than 30 miles from the treating hospital.

**Call our Family Placement Coordinator at (971)230-6702 for more information.**

## IF YOU MEET THESE QUALIFICATIONS, TAKE THE NEXT STEP:

Contact your child's assigned hospital case manager/social worker to **get a referral**. You will be asked a series of referral questions that must be answered completely.

### Referral Contacts:

- Doernbecher Children's Hospital / OHSU: (503) 418-4064
- Randall Children's Hospital: (503) 413-4707
- Shriners Hospital for Children: (503) 221-3783
- The Kartini Clinic: (503) 249-8851
- Referrals for other Portland area hospitals: Please have a social worker call (971) 230-6702.

While we do our best to accommodate every request, reservations are based on room availability. You can make a reservation up to 3 months in advance of your child's medical appointment or hospitalization.

The maximum stay for one visit is 3 months.

